

KAL-K Flow Switch



Benefits and Features

- Revolutionary Microprocessor-Based Switch-Point Stabilization
- NPT and 3-A Compliant Sanitary Fittings
- Compact Design
- No Moving Parts
- Extremely Low Pressure Loss
- Easy to Operate
- Insensitive to Dirt

General Description

The KAL-K thermal flow switch utilizes advanced microprocessor based technology to provide a stable setpoint regardless of changes in temperature. The KAL-K's solid-state switches can be configured as NPN or PNP and normally-open or normally closed. Based on the calorimetric principle, the KAL-K can continuously monitor the flow of both viscous and non-viscous media. Unlike other designs, the absence of protrusions prevents contaminant from building up on the probe tip. This improves the KAL's performance in two ways:

1. The KAL's sensing stability is increased because contaminant cannot thermally isolate the probe from the liquid.
2. System down-time associated with probe cleaning is dramatically decreased.

Specifications

| | | | |
|------------------------------|---|-------------------------------|----------------------------------|
| Switching Range: | 0.05 - 2 m/s | Power Requirements | |
| Media: | water-based liquids 60 cSt Max. | Supply Voltage: | 24 VDC \pm 10% |
| Response Time | | Optional: | 110 VAC |
| Typical: | 5.6 seconds | Current Draw: | 300 mA max. |
| Optional F: | 1.2 seconds | Switch Characteristics | |
| Fittings | | Adjustment: | by Potentiometer |
| Standard: | 1/2" or 3/4" NPT | Status Indicator: | Bi-colored LED |
| Sanitary: | 1 1/2" Tri-Clamp® | 24 VDC Units: | |
| Explosion Proof: | 1/2" or 3/4" NPT | Type: | N/O PNP or NPN open collector |
| Flow Trend Indicator: | 8 Red LEDs | Switch Rating | |
| Temperature Rating | | DC only: | 400 mA @ 24V |
| Operating: | 32°F to 250°F | 110 VAC Units: | |
| CIP: | 280°F Max. | Type: | N/O dry contact |
| Maximum Pressure: | 1450 PSIG | Switch Rating | |
| Wetted Parts | | AC only: | 5A @ 240 V |
| Standard: | 304 SS | DC only: | 0.2 A @ 110V |
| Sanitary: | 316-TI SS | | |
| Explosion Proof: | 316-TI SS | | |
| Housing | | | |
| Standard: | NEMA 4 (Nylon®) | | |
| Sanitary: | NEMA 4 (Nylon®) | | |
| Optional: | Explosion Proof (Al) Class I & II, Groups C & D | | |

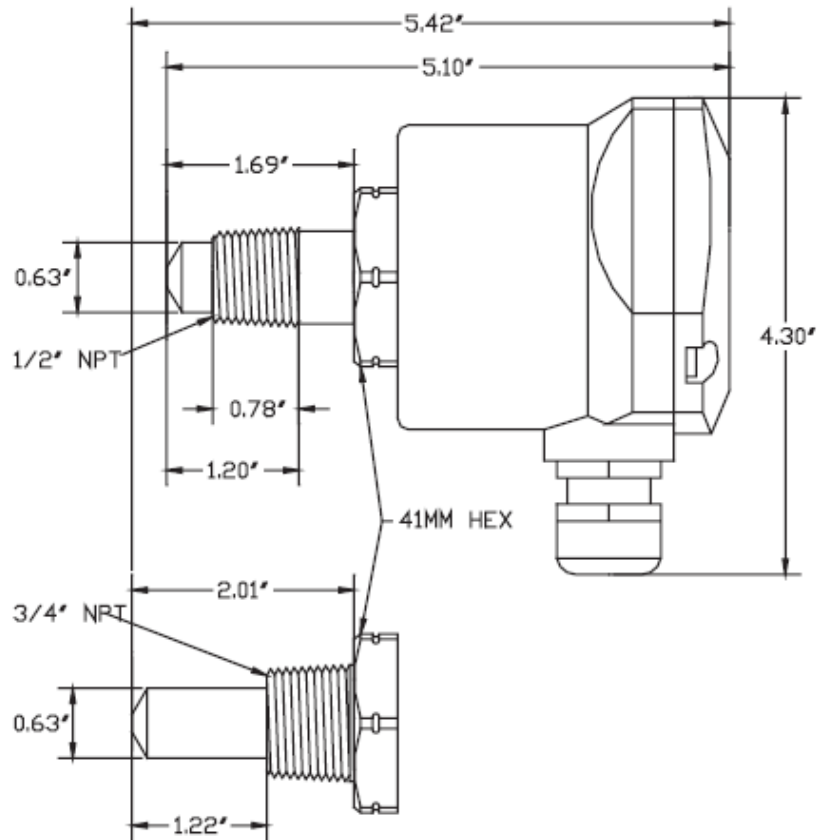
KAL-K Flow Switch

Ordering Information

KAL-K Ordering Information

| Model | Wetted Parts | 1/2" Model | 3/4" Model |
|--|--------------|----------------|-------------|
| Standard | 304 SS | KAL-4215 | - |
| Standard 316-TI SS | 316-TI SS | KAL-4315 | KAL-4320 |
| Explosion Proof | 316-TI SS | KAL-4315 | KAL-4320-EX |
| Sanitary | 316-TI SS | KAL-4340-S | |
| Plug Connector with 6 ft cable (not available in explosion proof) | | Suffix: "M12" | |
| N/C Switch Logic | | Suffix: "K" | |
| 110 VAC version with dry contact | | Suffix: "P03R" | |
| Fast Response Time | | Suffix: "F" | |

Dimensions



KAL-K Flow Switch

↩ Dimensions

